

Look for other Raptor Fishing Technologies fine products designed to enhance your fishing experience...

RaptorCap™ enables anglers to better see their electronics display by blocking unwanted light from hitting the screen, thus reducing screen washout, reflections and glare for increased image contrast and improved visibility. In addition, **RaptorCap™** helps protect expensive electronics from rain, snow and the sun's destructive, ultraviolet rays.



The **RaptorTail™** is built on our exclusive FlexCable™ chassis using 250 lb. test, aircraft-grade cable which gives the **RaptorTail™** the lifelike motion and incredible strength required to attract and land trophy fish. The no-kink FlexCable™ chassis insures easy, all-day casting with less fouling and less tuning. That means more productive, trouble-free fishing!

The **RaptorTail™** is available in multiple sizes and weights, with choices of color and number of blades and the option of premium marabou or bucktail skirts available in a myriad of colors. With over 4,000 combinations possible, you're sure to find a **RaptorTail™** to suit YOUR fishing needs.



2 Year Limited Warranty

Raptor Fishing Technologies, Inc. warrants to the original purchaser that each product is free from defects in material and workmanship for a period of two years from the original date of purchase. If the product proves defective within the warranty period, return it along with proof of purchase to:

Raptor Fishing Technologies, Inc.
5161 Thatcher Road
Downers Grove, IL 60515

Raptor Fishing Technologies, Inc. is the sole judge of the claim. This warranty does not cover normal wear and tear, improper installation, damage due to accident, misuse, abuse, modification, negligence or damage resulting from shipping. This warranty is valid only in the United States.

Do not return the product to the retailer. Retailers and wholesaler outlets are not authorized to perform warranty exchanges on behalf of Raptor Fishing Technologies, Inc.

There are no other express warranties beyond the terms of this limited warranty. In no event shall any implied warranties, including merchantability and fitness for a particular purpose, extend beyond the duration of the express warranty contained herein. Raptor Fishing Technologies, Inc. assumes no liability for injury or damage to property resulting from the use of this product. In no event shall Raptor Fishing Technologies, Inc. be liable for incidental or consequential damages.

Some states do not allow limitations on how long an implied warranty lasts or the exclusion of limitation of incidental or consequential damages, so the above limitations or exclusions may not apply to you. This warranty gives you specific rights and you may have other rights, which vary, from state to state.

To see other **RAPTOR** fishing products visit
www.raptorfishing.com

Raptor Fishing Technologies, Inc. • 5161 Thatcher Road, Downers Grove, IL 60515
Phone: 630 725-9373 Fax: 630 725-9473



Designed,
manufactured
and assembled
in the U.S.A.

Patents Pending

IN001.0607

RAPTORFIN™

Maximize Trolling Motor Control

Installation Instructions

The RaptorFin™ was created by Raptor Fishing Technologies to maximize the performance of their trolling motors. Like all serious fishermen, they fish when and where the fish are biting, regardless of weather or water conditions. As a result, they needed improved, maximized performance from their trolling motors whether they were running fast or slow, in deep water or shallow water, in waves or calm, or in headwinds, sidewinds or tailwinds.

To get the maximum performance they were looking for from their trolling motors, Raptor Fishing Technologies created the RaptorFin™. After years of research, development, and extensive testing in all weather and water conditions, they got that performance – and they knew they would never again fish without the RaptorFin™!

With the RaptorFin™, it's like having a rudder up front. Steering, control and stability are improved, both under power *and* while drifting. It reduces the vertical movement of the bow in rough water and the lateral movement of the boat in crosswinds. It also reduces trolling motor noise and vibration, so there's less chance of spooking fish.

The RaptorFin™ virtually eliminates cavitation, which allows you to run your trolling motor shallower. When you're running shallower, there's less likelihood that the motor or prop will come in contact with underwater hazards and nuisances, like rocks, stumps and weeds, which could damage your trolling motor.

If you want maximum control and efficiency from your trolling motor, fish with the RaptorFin™ and be prepared for a level of performance you never dreamed possible.

RaptorFin™ Installation Instructions

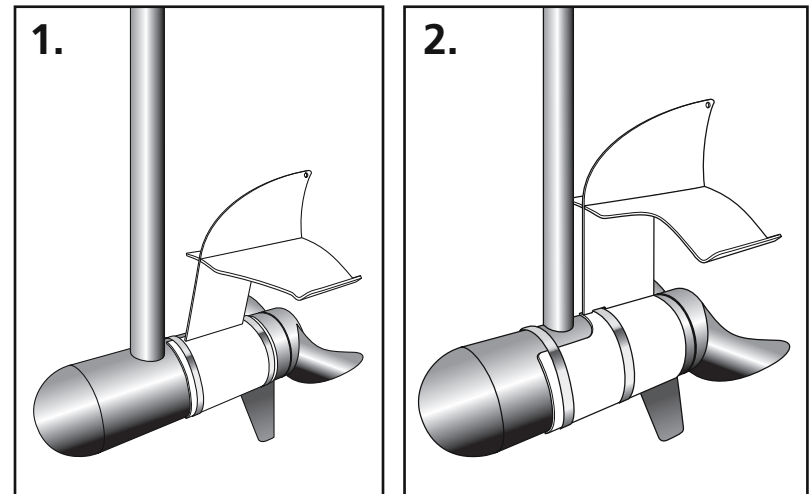
1. Disconnect the power from the trolling motor per motor manufacturer's instructions.
2. Place the RaptorFin™ on the body of the motor positioned so that the fin will be above the motor and behind the shaft when the motor is in the normal operating position. (See illustrations 1 and 2 at right)
3. Install the two stainless steel band clamps (included) per the illustration appropriate for your model. At this time, do not tighten the clamps so that the position of the RaptorFin™ can be adjusted per the following instructions.
4. Carefully rotate the RaptorFin™ on the body of the motor so that the fin will be vertical (directly above the motor) when the motor is in operation. Slide the RaptorFin™ forward or backward on the body of the motor so the trailing edge (rear) of the arched, horizontal "wing" is as far forward as possible while maintaining no less than 1/2" behind the rotating plane of the propeller. (See illustration 3 at right) Carefully rotate the propeller manually and, if necessary, adjust the position of the RaptorFin™ to insure that no part of the RaptorFin™ comes in contact with any part of the propeller or the propeller hub when the propeller rotates.

When the RaptorFin™ is in the correct position, snug the band clamps (but do not fully tighten them at this time) so that the RaptorFin™ does not move when performing Step 5.

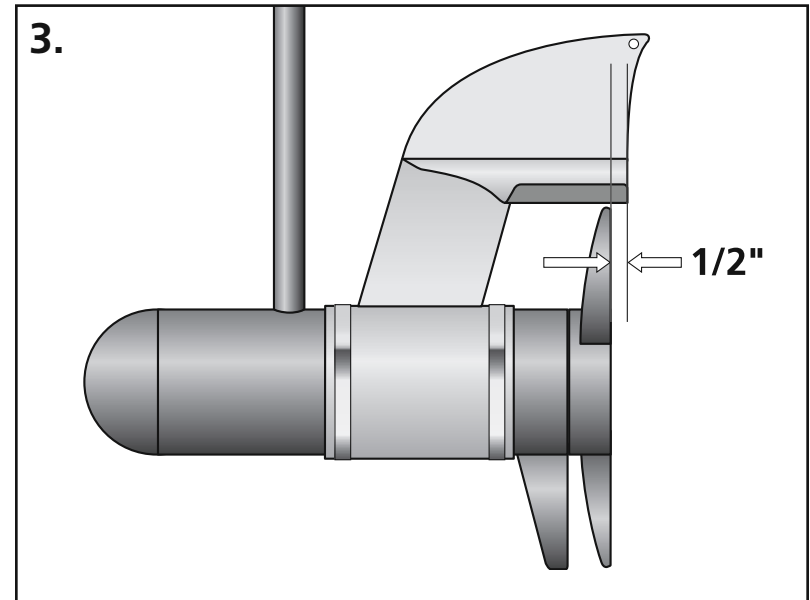
5. Carefully and slowly, raise and lower the motor through its full range of motions to insure that the RaptorFin™ does not come in contact with any part of the boat or any equipment or accessory on the boat. Check the clearances carefully when the motor is both deployed and in its stored left and right positions on the deck to insure that the RaptorFin™ does not interfere with the safe operation of the boat or any of its accessories and that it does not contact the boat or any accessories. If necessary, readjust the RaptorFin™ to clear the boat and its equipment and accessories and repeat Step 4 above to insure that the RaptorFin™ is correctly mounted. (Note: Minn Kota® motors equipped with a CoPilot™ remote control accessory should store on the opposite side of the accessory.)
6. When the RaptorFin™ is correctly mounted in its final position, tighten the band clamps to 40 in.-lbs. of torque. Insure that the RaptorFin™ does not move when tightening the clamps.
7. Reconnect power to the motor per motor manufacturer's instructions. Proceed with use of your trolling motor.

Have your local marine/fishing dealer install the RaptorFin™ if you are not comfortable installing it yourself. Costs associated with the installation of this product are the sole responsibility of the purchaser.

Minn Kota® and CoPilot™ are trademarks of Johnson Outdoors, Inc.



The fin section of the RaptorFin™ must be positioned vertically above the motor body and behind the shaft. Insure that when the trolling motor is either stored or deployed, no part of the RaptorFin™ contacts the boat or any accessory.



For optimum performance, the trailing edge (rear) of the horizontal "wing" of the RaptorFin™ should be positioned 1/2" behind the plane of the propeller.